



Issue: April 2018

Supplementary Milk Payment

- The board of North Cork have agreed a supplementary payment of 0.75 CPL on all 2017 milk supply. Similar to prior year, any payment will be after consideration of debt owing to the co-op pre 30th Sept 2017. This is being paid with the March milk.
- In light of recent weather events, a €5 per Tonne rebate was agreed on all April feed bags/bulk purchased during calendar month April. This will be repaid with May milk.

Milk Price

The milk price for March 2018 is 31.00 cent per litre (incl. Vat.) for milk of 3.60% Butterfat and 3.30% Protein.

Weekly Deliveries

Day	Area
Monday	001 Kanturk
Tuesday	002 Glensouth
Wednesday	003 Castlecor 004 Banagh
Thursday	005 Ballyhoulihan
Friday	006 Cullen

Please order 24 hrs in advance
instore or on 02950003

SPRING SALE

Farm Hardware/Fencing

Big reductions across our range of water troughs, piping, stakes, wire and fencing accessories

*Sale Starts 2nd
April 2018*

Call instore for more details or phone
02950003 or 02979002

Breeding replacement heifers

Replacement heifers should be bred to calve at the start of the calving season. I'd recommend that seven days artificial insemination (AI) is carried out. On day eight, the start of the second week, inject any heifers not bred with prostaglandin. Practically all of the remaining heifers should cycle over the next four days. AI sires for use with your maiden heifers should be easy calving – the most important criteria when selecting bulls for maiden heifers. Make sure that heifers are well fed after they are bred. Previous research at showed a halving in conception rate of heifers that experienced a nutritional shock shortly after breeding. Grass is good enough provided that there's enough of it. Enough grass is approximately 2.2% of body weight in dry matter (that's an allowance of 8kg DM/head/day for 350kg heifers at breeding). If short of grass, supplement during the two-to three weeks after breeding. Repeating heifers should be bred to either an easy-calving stock bull or with AI. If using stock bulls, they should be fertility tested before joining the group and at least two should be run with a group of heifers. If you plan to put the repeats to AI, a teaser bull should be used, because as the breeding number gets smaller, it's harder to pick up the repeats.



ICBF have just launched a new and improved version of the HerdPlus Dairy Sire Advice Application. This application will allow farmers to select the bulls they wish to use for the breeding season and match these bulls to the most suitable cows. New features include:

- Select females for crossbreeding, selective/contract mating, beef mating and culling.
- Conformation traits now included in sire allocations.
- The crossbreeding option is used to maximise heterosis
- New and improved bull selector options.
- Bull Team reliability calculated as you select your bull team. This factors in relatedness of bulls and herd size
- Option to quickly select AI company bull teams

Use Bull Teams

Herd Size (Incl. Heifers)	Recommended minimum number of Bulls
0-50	7
50-100	7
100-150	8
150-200	10
200-250	11
250-300	12
300-350	13
350-400	14

It is recommended to use a team of bulls across your cows and heifers.

The Sire Advice application will be available in both standard (simpler and quick) and advanced forms labelled '**Manually Enter Bulls**' and '**Sire Advice Plus**' with all the new features.

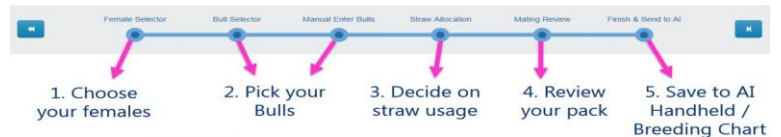
SIRE ADVICE
Manually Enter Bulls

START

SIRE ADVICE PLUS

START

HerdPlus Sire Advice



5 EASY STEPS

Female Selector allows user to identify females for culling, Beef Mating, Selective Mating and Crossbreeding.

Bull Selector feature allows the user to quickly filter through all the bulls in the 'Active Bull List' or through all available AI Bulls. A new feature of the bull selection is the ability to select teams of bulls pre-loaded by AI companies.

Straws can be allocated by either desired percentage usage of each bull or by newly added feature number of straws of each bull.

All Sire Advice selections can then be transferred to AI technician handhelds & Herdplus Breeding Charts.

The Sire Advice mating program generates the best matings to maximize the genetic gain in your herd in terms of EBI including milk and fertility sub-indexes. Sire Advice will then minimize differences between Milk & Fert. sub index's and minimize variation on milk kgs. This will help to breed a more balanced next generation dairy female replacement.

Any queries or feedback on Sire Advice, please call 023-8820452 or email query@icbf.com

Call Instore today for all your farm input needs, Quality products at competitive prices. Kanturk [029 50003](tel:02950003)/Cullen [02979002](tel:02979002)

